

**A New Approach:
Interactive Management
in Price Labelling**



ES 1000

ES 2000

ES 3000

ES 4000

ES 5000

ES 6000

ES 7000

ES 8000

ES 9000



Welcome to the future of Price Labelling!

A period of intensive and creative research and development is now culminating in the presentation of our New Generation of innovative Price Labelling machines.

It was always our ambition to stay just ahead of general development. We are particularly proud of the new machines, which combine an ingenious industrial design with unprecedented functionality.

For perfect management of all the production processes in weight and price labelling we have developed the intelligent software ESMS – the heart of our Price Labeller. It enables all the

processes to be controlled via the touch screen simply – by entering a PID number (product identification) and a CID number (customer identification). Using multi-tasking, the machine continues running whilst the next production run is being prepared.

Exceeding previous Price Labelling speeds, full of technical refinements and at the same time aesthetically pleasing we have achieved pioneering work and entered new territory with this generation.

Welcome to the future.



The Highlights

Properties

- output up to 150 packs per minute
- automatic adjustment of product guides, printer, label position and label rotation
- fast change of label reels by servo device
- easy replacement of thermal print heads without customer service
- conveyor belt replacement with cable-free plug-in
- conveyor with quick belt tensioning device
- labelling from below with drum printer: no belt adjustment, no belt recess
- multi-tasking for uninterrupted Price Labelling

Construction

- industrial design housing in stainless steel
- stable machine base with minimum number of legs
- conveyors for long packs up to 750 mm
- thermal printer options: 12 dots/mm (300 dpi), print width 104 mm
 8 dots/mm (200 dpi), print width 80 mm

High Performance Applicator System

- automatic height compensation up to 200 mm
- no adjustment needed for different labels
- rotation of the labels for market-dependent positioning on the pack
- no external air supply needed

Long service life and availability

- brush free drive motors
- automatic control of the printing speed
- lifting of print head between each label

ESMS terminal

- brilliant colour display with touch screen
- clear operator guidance with on-screen messages
- interactive control of the system
- convenient master data entry
- label software with true type fonts and logos
- packaging software
- pre-selection memory (no down time for article change)

Service

- remote maintenance via modem connection
- on line software update

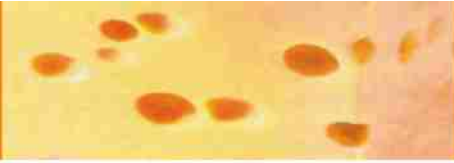


ES 3000

Manual Price Labelling

- ideal for low capacities and small packaging operations in the food and non-food sectors
- the right solution for packs which can not be labelled automatically
- increases efficiency in the organisation of the packaging process, e.g. for mixed cartons





ESD 104
large reel of labels
with 210 mm diameter



ES 3060



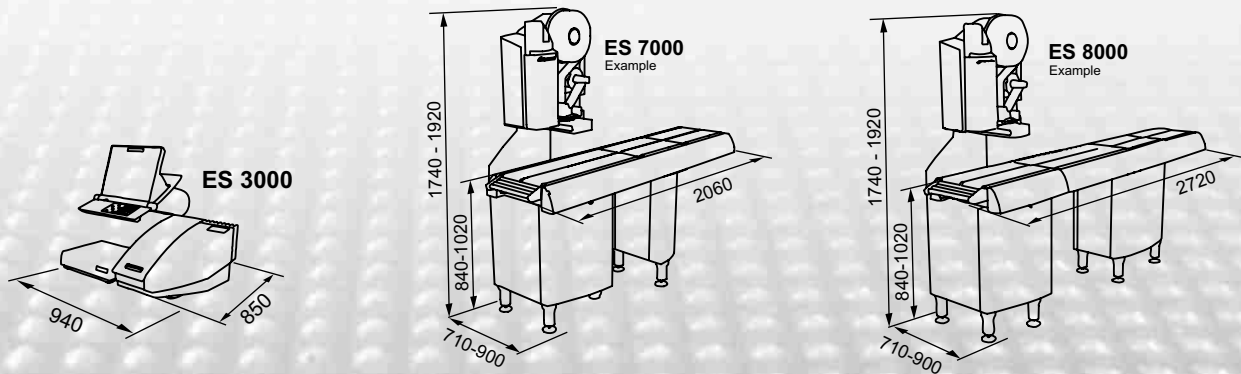
The ES 3000 offers a rational and flexible operation and maximum Price Labelling convenience wherever a manual solution is required – in both the food and the non-food sectors. The highly compact, robust machine made in stainless steel takes up little space and fits easily into any production environment.

The large label reel with a diameter of 210 mm minimises time lost through reel changes. The ES 3000 is particularly user-friendly with clear operating elements, a touch screen layout in the latest TFT technology and avoidance of dirt traps, which were main objectives during the design stages.

Conclusion: an all-round, refined and state of the art system for Manual Price Labelling.

Modell	ES 3000 15 kg	ES 3000 60 kg	ES 7000	ES 8000
Pack size in mm (L x W x H)				
Max. with alignment unit	–	–	370 x 280 x 200	370 x 280 x 200
Max. without alignment unit	–	–	370 x 360 x 200	370 x 360 x 200
Max. with long pack program	–	–	up to L 750*	–
Labelling output packs/min.	–	–	up to 120	up to 150
Multiple printer operation	Yes	Yes	Yes	Yes
Total printer	Yes	Yes	Yes	Yes
8 Dot/mm / 200 dpi	Yes	Yes	Yes	Yes
12 Dot/mm / 300 dpi	Yes	Yes	Yes	Yes
Label passage	110 mm	110 mm	110 mm	110 mm
Maximum printing speed	100 mm/s	100 mm/s	300 mm/s	300 mm/s
Print head service life optimised	–	–	Yes	Yes
Print width	80 / 104 mm	80 / 104 mm	80 / 104 mm	80 / 104 mm
Label minimum W x L	22 / 37 x 15 mm	22 / 37 x 15 mm	37 x 37 mm	37 x 37 mm
Printer from below	–	–	52 x 37 mm	52 x 37 mm
Label maximum W x L	110 x 480 mm	110 x 480 mm	110 x 200 mm	110 x 200 mm
Printer from below	–	–	110 x 130 mm	110 x 130 mm
Label reel core	76 mm	76 mm	76 mm	76 mm
Label reel outside diameter	210 mm	210 mm	285 mm	285 mm
Scales	static	static	dynamic	dynamic
Weighing range	3 / 6 / 15 kg	15 / 30 / 60 kg	3 / 6 / 8 kg	3 / 6 kg
Scale increment	1 / 2 / 5 g	5 / 10 / 20 g	1 / 2 / 5 g	1 / 2 g
Scale	330 x 235 mm	540 x 430 mm		
RS 232	Yes	Yes	Yes	Yes
RS 485	Optional	Optional	Optional	Optional
Ethernet	Yes	Yes	Yes	
Internal analog modem	Yes	Yes	Yes	
PS/2 connection	Yes	Yes	Yes	Yes
Parallel	Yes	Yes	Yes	Yes
Height compensation & cross settings	–	–	automatic	automatic
Number of legs (basic machine)	–	–	5	8
Memory			20 GB	
Multimedia slot			MultiMediaCard	
Mains voltage			190V to 240V / 50 - 60 Hz	
Operating temperature			- 10 °C to + 40 °C	

*depends on packages and machine configurations



ESPERA-WERKE GMBH

P.O. Box 10 04 55 • 47004 Duisburg
 Tel. ++49(0)203/30 54 - 0 • Fax ++49(0)203/30 54 - 275
 info@espera.com • www.espera.com